

Efficiency Performances of Two MPPT Processes for PV System with Different Solar Panels Irradiances

Anrudha Kumar Singh¹, Priyanka Maheshwari², Dr. Sanjay Jain³

[#]M.Tech (Electrical Power System) Scholar, RKDF University Bhopal, India¹

Assistant Professor, Department of Electrical Engineering, RKDF University Bhopal, India²

Head of Department, Department of Electrical Engineering, RKDF University Bhopal, India³

lanrudhasinghsee@gmail.com, 2priyankabits4@gmail.com, 3jain.san12@gmail.com

ABSTRACT

The present renewable energy impetuses are a major source of Solar impetuses. This renewable energy source into electricity of solar photovoltaic (PV) cells can convert. the Maximal Influence Point Tracking (MPPT) rewards for maximum impetus extractor from PV panels by using various irradiance levels. the overall effectiveness of work for two common MPPT approaches used in PV applications of different technique perturb and Observe (P&O) and Incremental Conductance—is examined (INC). Various changes in solar irradiance is performed of analysis of the results for the processes s based simulation of MATLAB. the same performance for both, more concentrated calculations should be used for INC Results showed that the efficiency of P&O processes was higher than INC obtain the values. In measuring the output influence, current and voltage responses, the use of a solar array having constant and variable irradiations was employed as input for the processes. In order to determine how the processes would react to variations in solar array irradiation, the output waveforms from a simulation run were compared. sufficient the results of the P&O procedures are often excellent. However, they must be improved in order to meet the demands of facing confident time in addition to their speedy reaction for the processes to work better than in Cond procedures.

Keyword: Solar Photovoltaic (PV) Perturb and Observe (P&O) Incremental Conductance (INC) algorithms MPPT techniques Constant & variable Irradiation

1. INTRODUCTION

In recent times, the mechanisms for converting solar impetuses have made it to be available insignificantly compact size. The development of such an effective system which is small yet influence fuel enough to meet high electric influence demand, has been made possible for engineers in the field of influence electronics through research advancement. Impetus's can be generated from solar which is widely accessible on the earth's surface; this solar can be converted into the kind of impetus's humans require and it can be used efficiently [1]. Generating influence from solar, a standalone or grid-connected influence generating system can be used, depending on factors like load area location, utility and availability of a close-by influence grid[2].

Although PV systems have enjoyed great advances like improved cell efficiency and cost reduction, the widespread use of the PV systems have been significantly restricted by low impetus's conversion efficiency. More so, environmental factors like solar radiance besides surrounding temperature significantly determine the impetus's amount which can be produced. Thus, a suitable MPPT is required by the control unit to be able for obtaining the maximum influence generated from the output PV array, which can be then turn enable a provision of a duty cycle that is appropriate for the DC-DC converter[3,4].

A solar cell has low efficiency and its efficiency can still not be improved by connecting the solar cells for the formation of a panel[5].

Owing to the I-V non-linearity characteristics in the influence generation of PV systems, the MPPT now comes in both grid-connected and standalone influence generation systems. This makes supplying steady influence to a specific load difficult. Including the MPPT technology to the PV system designing considers a good way to enable the transfer of most stable and highest possible influence from source to load. The reason behind this is the continuous variation in the influence which these panels generate, depending on weather related factors like temperature and irradiance; the efficiency with which influence is converted looks very low, with just not more than 15% of the total converting impetuses from sunlight becoming electricity[7].

be improved is through the application of theorems of the maximum influence transfer.

Thus, the inclusion of MPPT in PV systems to confirm that solar panels generate the maximum influence amount. A nonlinear correlation is demonstrated by the characteristics of PV panel (I-V & P-V) between irradiances & temperature. Nonetheless, a special point where the whole system can function with high efficiency can be found in the characteristic curve is presented in Figure 1. This unique fact is devoted to maximum influence point MPP, which can be considered to ensure that the PV system is functioning at it in the production of the maximum amount of influence, calculations, monitoring and control techniques are required [8].

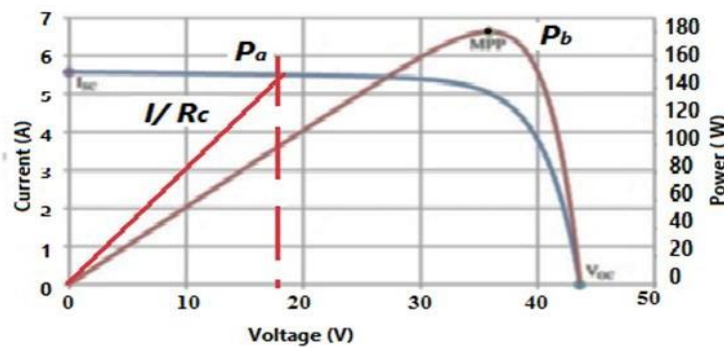


Figure 1. Characteristic I-V and P-V curves of a solar panel

The output of influence varies just as there is a variation in the solar radiation. Figure 1 explains the maximum influence tracking principles, where the slopy line I/R_c connotes a constant load, R_c . The direct connection of this load across PV cell will result in it operating an influence P_a which is not the same as the maximum P_b , despite the availability of the maximum influence from the array. So, an introduction to the DC-DC converter or an influence conditioner is concerning the solar PV module in addition to the load. The load is adapted to the PV array through the use of this converter in order to enable the transformation of the characteristics along the locus of maximum points, thereby leading to the transformation of maximum influence from the array. This change is made to the duty cycle of "D" till the time when the peak point is achieved [9-10].

The MPPT can be regarded as an electronic device which can be used to extract the maximum potential influence from a solar panel. The MPPT changes the duty cycle of the DC/DC converter to match the impedance of the load with a PV cell, thereby leading to a variation in the panel's electrical operating point. Despite the fact that the Mechanical tracking system and MPPT can use together, it is important to note that they are totally two different systems.

Over the past decades, many MPPT techniques have been analyzed. The first objective of this paper is to study and analyze them. The most two processes that were found most suitable for medium and large size PV applications are perturb and observe (P&O), and incremental conductance (INC). These were compared and tested dynamically according a recently issued standard concerned irradiation and temperature. Several modifications to the P&O and the INC processes are proposed, which overcome their poor performance when the irradiation changes continuously using MATLAB simulation which are mostly mentioned in the literatures were made, and they present advantages for constant and variable irradiances in related to the techniques with efficiency, output influence of MPP.

2. MPPT PROCESSES

Recently, the introduction of optimization processes for MPPT in PV systems has been made. The MPP can be randomly searched across the P-curve area through the use of the stochastic characteristic of optimization processes, thereby making it fit for tracking the GMPP. Owing to the variation in the MPP of a solar panel caused by temperature and irradiation, MPPT processes become crucial in PV applications. This is because MPPT processes enhance the generation of maximum influence from a solar array [11].

Various methods of finding the MPP have been developed and published in the past decades. All these techniques are not similar because of the variation in their cost, sensors, convergence speed, complexity, accurate tracking during changes in temperature and/or irradiation. The most commonly used techniques out of all that have been developed are Perturb and observe (P & O) and Incremental conductance (INC) which are more advantageous because of their ease of implementation. However, they also have their limitations. The other techniques which have been developed according to different principles include neural network, current sweep technique, fuzzy logic control, and fractional open circuit open voltage or short circuit current, and this technique is able to provide an estimated MPP.

Both processes P&O and INC are established on the principles of hill-climbing basis, which involves the movement of the operation point of the PV array in the direction that directs for increasing influence. The easy implementation of hill-climbing techniques as well as its efficiency when irradiation is constant makes it one of the most common MPPT methods [12]. Both are advantageous because of the low computational influence which they require as well their simplicity.

The optimization processes P&O is made up of converter input current or voltage reference which varies. A measurement of the influence's amount which is panel conversation has been taken. If the converted amount of influence is more than that which was previously measured, it implies a proportional steady increase in the voltage reference, but if not, it implies a decrease. Finding the optimum MPPT requires continuously taking the steps. In some situations, the MPP may not be able to find, particularly under partial shading, is regarded as the limitation of this processes.

The implementation of the processes as well as taking it as a reference point is a goodie because it is a processes which is commonly used. Its flow chart can be seen in figure 2, where $Y(t)$ represents the reference signal that might be either voltage or current solar PV. For achieving MPP is the main purposing, the system operating point could be changed with a small perturbation (ΔY) is applied to the reference signal of the solar PV and then measuring the output influence after each perturbation. A comparison is made, if the measured influence is more value with respect to the preceding value, after that a reference signal perturbation will continue in the same direction. Generally, when a measuring influence of the solar PV stands a smaller amount with respect to the former value, a perturbation will be utilized with reverse direction and then a procedure will continue to achieve the MPP.

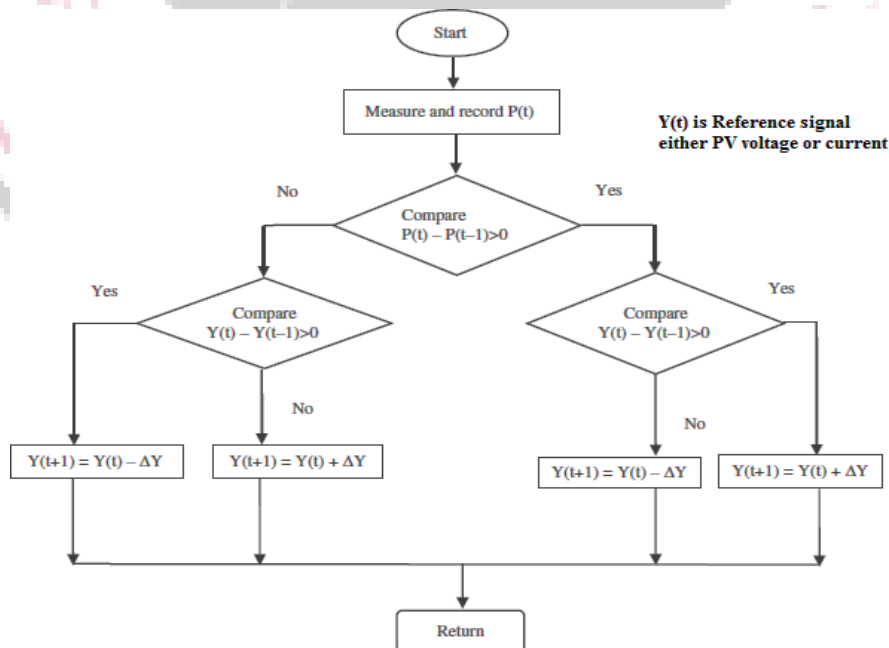


Figure 2. Flowchart of conventional MPPT P&O processes

2.1 Incremental Conductance

The INC processes is constructed on the fact concerning a slope of the influence curve against each of voltage or current of the PV module considers zero at the MPP, a movement of positive or negative towards the left of it and on the right is negative or positive, as explain in Figure 3.

- $\Delta V/\Delta P = 0$ ($\Delta I/\Delta P = 0$) at the MPP
- $\Delta V/\Delta P > 0$ ($\Delta I/\Delta P < 0$) on the left
- $\Delta V/\Delta P < 0$ ($\Delta I/\Delta P > 0$) on the right

When a comparison of the influence increment against the voltage or current increment through two successive samples is made, then a MPP voltage change may be specified. The tracking of the MPP can done by a comparison of the instantaneous conductance term (I/V) with an incremental value ($\Delta I/\Delta V$) as illustrated in the flowchart, figure. 4. A reference voltage V_{ref} represents a PV array point which is required to control. The V_{ref} at MPP equals V_{mpp} , once an MPP is reached, then the operation of the PV array is maintained at this point if no change in ΔI has happened, or specifying a variety of atmospheric condition[13,14].

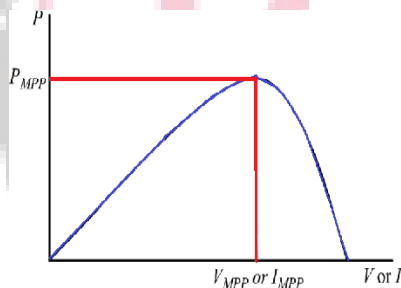


Figure3. PV array Characteristic influence curve.

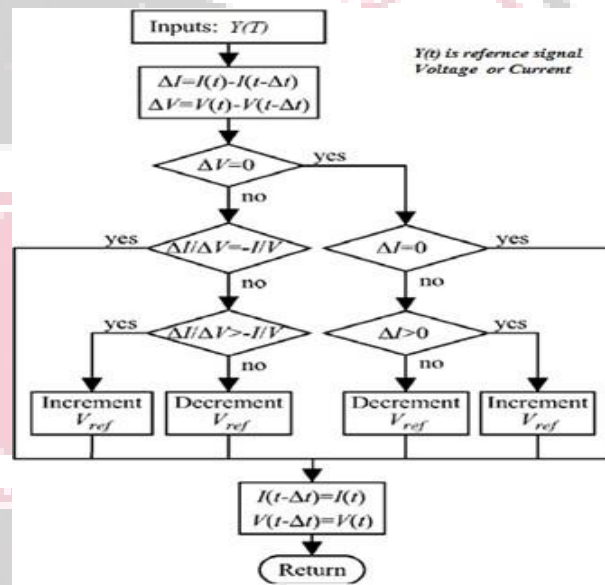


Figure4.INCprocesses flowchart

2.2.SolarArray

For a component of solar array, based on the diode equation below, a model of the array is enveloped:

$$I_d = I_{sat} (e^{qV_d/kT} - 1) \tag{1}$$

Where I_d indicates the diode current (A), V_d represents the diode voltage (V). In order to perform the simulation, a selection of a solar array that is capable of producing more than 100W was made. The first condition is concerned with voltage V_{oc} (open circuit) of 22V and current I_{sc} (short circuit) of 8.4A will be possessed by the panel. The V_{mp} - voltage at maximum influence - is 17.5V whereas the current I_{mp} – maximum influence - is 7.7A. Concerning a full solar illumination, an output influence of 135 W can be obtained from the solar array by plugging these values into $P = IV$.

Figure 5 shows that varying the PV solar array incident illumination alongside the output impedance, implies that the extraction of Influence versus Voltage and Current versus Voltage graphs can be performed so as to achieve the MPP of the solar array. The MPP is the influence peak versus Voltage graph. If the incident illumination of the PV solar array is varying in addition to the output resistance, A graphs of Influence against Voltage as well as Current against Voltage can be extracted for finding the solar array MPP, as shown in figure 5.

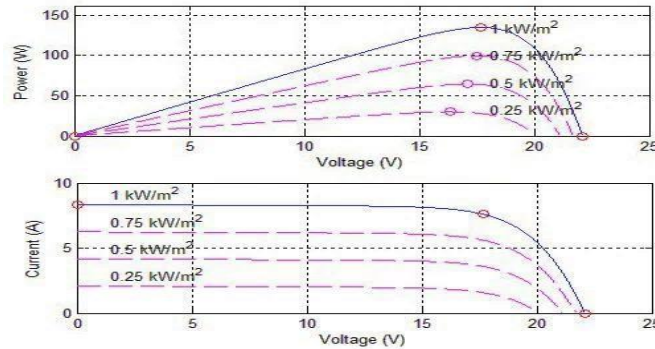


Figure5. Influence vs Voltage & Current vs Voltage graphs from PV panel model

3. CHARACTERISTICS OF PV SYSTEM

In order to provide a description of the features of (I-V) characteristic of the solar cells in various operating conditions, many models have been designed in the literature. The solar cell behavior is commonly represented by a single-diode model besides double-diode model [15].

The PV panel consists of a PV set cell which is arranged in a serial and parallel order so as to generate a normal maximum electrical influence which is dependent on the conversion efficiency of semiconductor photo-impetus's organizing the cells. A PV cell may be regarded like generator that produces a photo-current I_{ph} that depends on external factors like panel direction or working temperature. Presently, the one-diode model represents the PV cells (Fig. 6-a) and the double-diode model (Fig. 6-b) represents the different Para meters of the model [16].

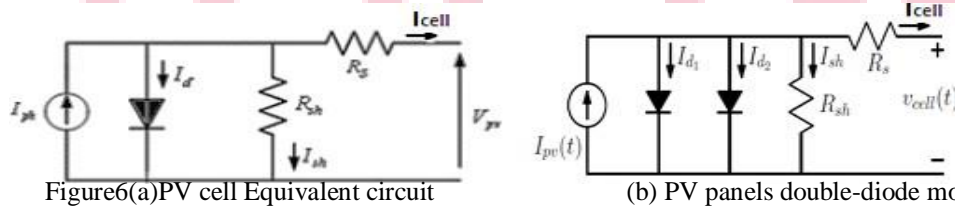


Figure6(a)PV cell Equivalent circuit

(b) PV panels double-diode model

the currents equation describing one diode model is

$$I_{cell} = I_{pv} = I_{ph} - I_D - I_{SH} \quad (2)$$

The current supplied by the cell I_{ph} is

$$I = I$$

The model of the PV panel centered on double diodes can be presented in figure 6-b. Subsequently, output the current I_{cell} can be denoted by

$$I_{cell} = I_{ph} - I_{d1} - I_{d2} - I_{sh} \quad (4)$$

Where I_{ph} represents current that has been generated from the light incident on the panel .More so, the diodes currents, by diffusion I_{d1} plus recombination mechanism I_{d2} , and the shunt current by R_{sh} which denotes to the panel loss, and be related to the V_{cell} can be given in Eq. (5).

$$I_{d1} = I_{s1} \left[\exp\left(\frac{V_{cell} + (I_{cell} * R_s)}{n_1 * V_t}\right) - 1 \right] \text{ for } i=1,2 \quad (5)$$

$$I_{sh} = \frac{(V_{cell} + (I_{cell} * R_s))}{R_{sh}}$$

where I_{s1} is the diodes reverse saturation current, and $V_t = kTo$ is the panel thermal voltage.

3.1. MPPT Operating Zone for DC–DC Converter Topology

The solar PV's MPPT operating zone relies on the topology of DC–DC converter, and the resistive load value is restricted thereby making the MPPT effective. The implementation of the MPPT is carried out under the converter control, i.e. it causes variation in the duty cycle (d). The main aim of making adjustments to the duty cycle is for matching the load impedance to the input impedance R in which is noticed by the converter. Figure 7 shows the solar PV impedance. There is a relationship between the R in noticed by the converter and the R_o connected with converter by characteristic equations. There is variation in this mathematical equation, depending on the topologies of converter [17].

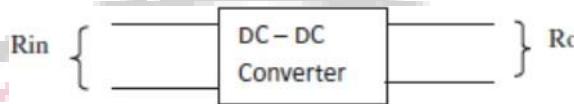


Figure 7. DC–DC converter diagram

The implementation of the improved MPPT structure is performed using the DC–DC buck converter as shown in Figure 8. The output voltage of solar PV is derived from the buck converter input voltage. The relationship between the (input and output voltage) buck converter is given by equation 6.

$$V_o = d.V_{in} \quad (6)$$

Where the output voltage is denoted by V_o , the duty cycle is d and input voltage V_{in} of the buck converter.

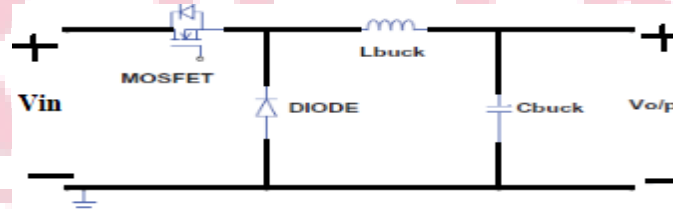


Figure 8: Buck converter diagram

4. COMPARISON OF CONTROL PROCESSES

Understanding the way these processes respond to various changes of solar array irradiance is possible through a comparison of the output wave forms from each run.

4.1. Case1: P&O at Constant Irradiance

A first MATLAB model run is done with a constant input irradiance by the solar array. A measurable amount of ripple is possessed by the response curve, which represent the output voltage as presented in Figure 9.a. When there is little initial overshoot at the current response, the PWM of the gate is controlled by the MPPT so as to bring it near the MPP as explained in Figure 9.b. In Figure 9.c the output influence stays almost constant from 3 m sec and above. A constant efficiency of 94% is achieved by the converter and then throughout the period of simulation the steady efficiency remains almost completely flat as presented in Figure 9.d.

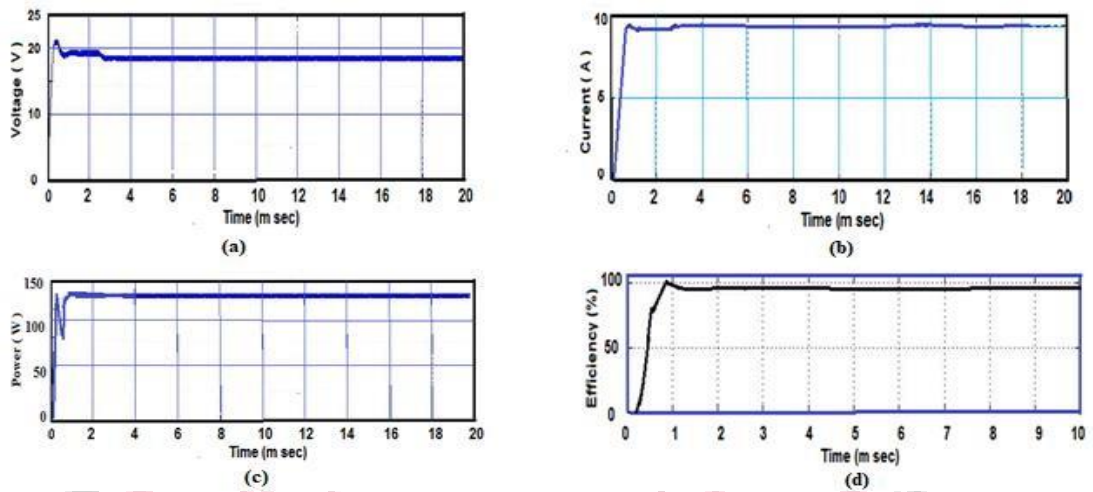


Figure 9: P&O simulation result at constant irradiance
 (a) output voltage (b) current response (c) output influence (d) efficiency

4.2. Case2: P & O with Variable Irradiance.

A second case involves simulation using variable irradiance to the input solar array. The changes in irradiance are tracked by both the source and output voltage as presented in figure 10.b. little start-up overshoot occurs in the current response to every change in irradiance. During the operation, there was a tendency of the source current oscillating a bit as shown in Figure 10.c. In comparison to the input influence which is shown in Figure 10.d, the output influence remains relatively close in magnitude. Due to the fact that the average of over 0:0001 was achieved by the input and output influence, efficiency of the converter shot to over 100%; this caused a little slow down in the input influence. In general, it can be said that despite the sudden changes in irradiance, the efficiency did not go below 80% as illustrated in Figure 10.e.

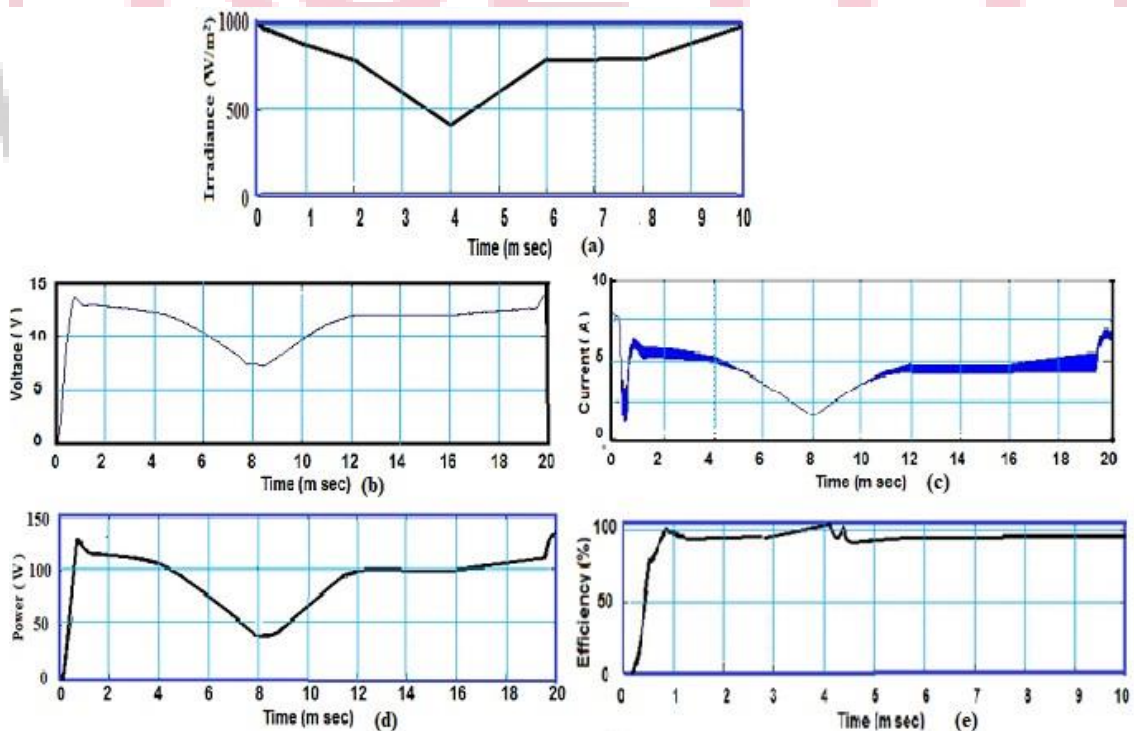


Figure10. P&O simulation result at variable irradiance
 (a) Irradiance (b) output voltage (c) current response (d) output influence (e) efficiency

4.3. Case3: INC with Constant Irradiance

The simulation of INC processes at constant input radiance is used by this run. It took a longer period of time for the source voltage to reach a level that is acceptable. The tracking of the MPP by the processes begins, but does not eventually reach the MPP because of the short duration of the run. Even though, Figure 7.a shows that the tracking is moving in the right direction even it eventually reaches the MPP within the next few processes repetitions, it ended up not doing so. Figure 7.b shows that while MPP is being tracked, the inductor current possesses four jumps in D. It only takes these processes little iteration before it converges to the MPP when the final output influence is close to 120W as illustrated in Figure 7.c. Figure 7.d shows that the efficiency for almost throughout the duration of the run was 97%.

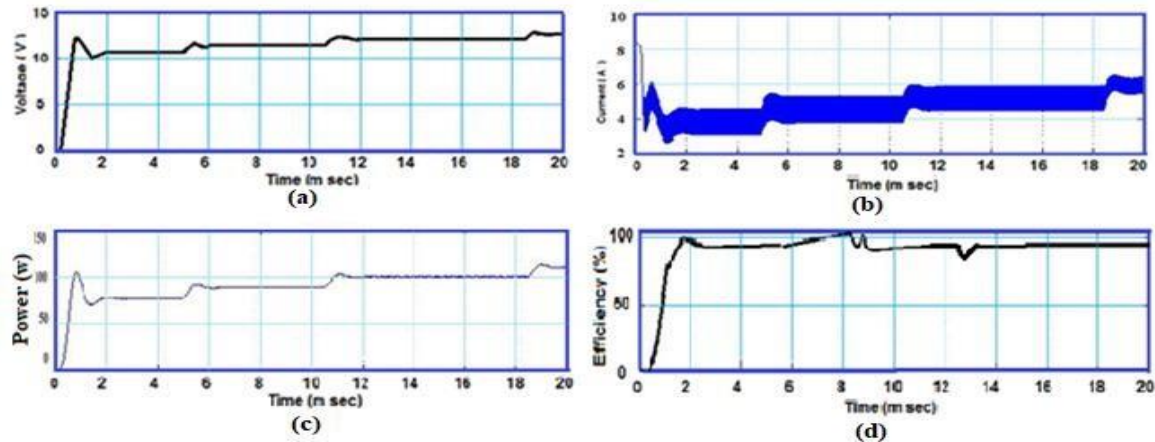


Figure 11: INC processes simulation result at constant irradiance
 (a) output voltage (b) current response (c) output influence (d) efficiency

4.4. Case4: INC with Variable Irradiance.

The final simulation of INC processes deals with variable irradiance applied to the solar array. Figure 12.a illustrates that the response of the source and output voltage is restricted subsequent for changing in the irradiance. The current response is shown in figure 12.b, a change as stair step occurs in the figure after 8 msec. The tracking of the MPP by the output was quite successful as seen in Figure 12.c. The occurrence of the largest oscillation was when the efficiency was calculated. For the capacitor and inductor to influence get back to a lower level of output influence, more time is required. More so, this also caused an increase in the efficiency of the converter subsequent to the increase in irradiance as shown in Figure 12.d.

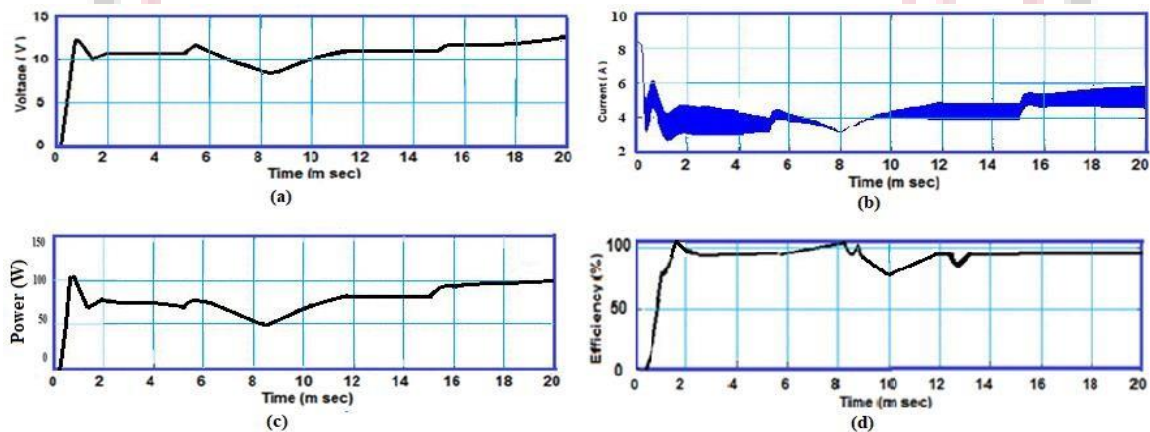


Figure 12: INC processes simulation result at variable irradiance
 (a) output voltage (b) current response (c) output influence (d) efficiency

5. CONCLUSION

A discussion of the MPPT was done in this article, and its tracking was also significantly improved. The MPPT's ability to track the MPP, enhanced its ability to optimize the low efficiency of the output of solar arrays. The overall system can greatly be improved when the MPPT capable of tracking the MPP is improved because the solar array is the systems' influence source.

Furthermore, a discussion on the solar array model was done, and the single diode model was used in designing the solar array. A measurement of the output current and voltage was made possible through the modeling of the solar array using the measuring parameters, output current and voltage which were used in driving the buck converter.

An existing assembly of data runs was carried out in two phases. The first phase involved using the P&O processes at constant 1000W/m^2 irradiance, a variable step in irradiance from 600W/m^2 to 1000W/m^2 at 0.08 to 0.01s , in addition to random varying of irradiance in the solar array.

Afterwards, the same three input signals were used in testing constant D. The testing of D was done as the basis for comparing it with other processes. lastly, the testing of the INC was performed, even though tuning the parameters for these processes was not easy. It was observed that very rapid response to transients or undershooting of the MPP was caused by the processes. The optimization of the INC processes to correspond with the P&O performance was not possible due to the time required to perform every test as well as the difficulty of optimization.

In general, the test results of the P&O processes were relatively good. The response of the P&O processes was faster and its performance was better than that of INC, because of the processes' ability to be optimized to meet specific timing requirements. This can be attributed to the complex nature of the computations for INC processes as well as operation speed. The optimal functioning of the processes could not be accurately provided by the results of the runs as a result of how difficult it is to optimize the INC processes.

REFERENCES

- [1] Ahmed J, Salam Z. An improved perturb and observes (P&O) maximum influence point tracking (MPPT) processes for higher efficiency. *Apply Impetus's* 2015; 150:97–108.
- [2] Zhao, J.; Zhou, X.; Ma, Y.; Liu, W. A novel maximum influence point tracking strategy based on optimal voltage control for photo voltaic systems under variable environmental conditions. *Sol. Impetus's* 2015, 122,640–649.
- [3] Kuperman, A.; Aver bukh, M.; Line kin, S. Maximum influence point matching versus maximum influence point tracking for solar generators. *Renew. Sustain. Impetus's Rev.* 2013, 19,11–17.
- [4] Seyedmahmoudian, M.; Mekhilef, S.; Rahmani, R.; Yusof, R.; Asghar Shojaei, A. Maximum influence point tracking of partial shaded photovoltaic array using an evolutionary process: A particle swarm optimization technique. *J. Renew. Sustain. Impetus's* 2014, 6.
- [5] Sheik, S.; Devaraj, D.; Imthias, T. A novel hybrid Maximum Influence Point Tracking Technique using Perturb & Observe processes and Learning Automata for solar PV system. *Impetus's* 2016, 112, 1096–1106.
- [6] M. Abdur Razzak, *et al.*, Design of a Grid-connected Photovoltaic Inverter with Maximum Influence Point Tracking using Perturb and Observe Technique, *International Journal of Influence Electronics and Drive System (IJPEDS)* Vol.7, No. 4, December 2016, pp. 1212–1220.
- [7] J. Ahmed and Z. Salam, "A Modified P&O Maximum Influence Point Tracking Method With Reduced Steady-State Oscillation and Improved Tracking Efficiency," *IEEE Transactions on Sustainable Impetus's*, vol. 7, no. 4, pp. 1506-1515, 2016.
- [8] Huynh, D.C.; Dunnigan, M.W. Development and Comparison of an Improved Incremental Conductance Processes for Tracking the MPP of a Solar PV Panel. *IEEE Trans. Sustain. Impetus's* 2016, 7, 1421–1429.
- [9] Karami, N.; Moubayed, N.; Outbib, R. General review and classification of different MPPT Techniques. *Renew. Sustain. Impetus's Rev.* 2017, 68, 1–18.
- [10] Seyedmahmoudian, M.; Horan, B.; Soon, T.K.; Rahmani, R.; Oo, A.M.T.; Mekhilef, S.; Stojcevski, A. State of the art artificial intelligence-based MPPT techniques for mitigating partial shading effects on PV systems—A review. *Renew. Sustain. Impetus's Rev.* 2020, 64, 435–455.
- [11] M. A. Abdourraziq and M. Maaroufi, "Experimental Verification of the Main MPPT Techniques for Photo voltaic System", *International Journal of Influence Electronics and Drive Systems (IJPEDS)* Vol. 8, No. 1, March 2017, pp.384–391

- [12] Soon, T.K.; Mekhilef, S. A fast-converging MPPT technique for photovoltaic system under fast-varying solar irradiation and load resistance. *IEEE Trans. Ind. Inform.* 2015,11,176–186.
- [13] Jedari, M.; Gharehpetian, G.; Fathi, S.H.; Vahids, S. An adaptive InCon MPPT processes considering irradiance slope tracking for PV application. In *Proceedings of the 2023 4th International Symposium on Environment Friendly Energies and Applications (EFEA)*, Belgrade, Serbia,14–16September 2016;pp.1–6.
- [14] K. S. Tey and S. Mekhilef, "Modified incremental conductance processes for photovoltaic system under partialshading conditions and load variation," *IEEE Transactions on Industrial Electronics*, vol. 61, no. 10, pp. 5384-5392,2022.
- [15] H. Islam, S. Mekhilef, N. Mohamed Shah, T. K. Soon, M. Seyed mahmousian, B. Horan, and A. Stojcevski .Performance Evaluation of Maximum Influence Point Tracking Approaches and Photovoltaic Systems, *Energies* 2018,11,365.
- [16] Ahmed J. Abid, Fawzi M. Al-Naima and Adnan Hussein Ali, " Comprehensive Modeling of Photovoltaic Arraybased on Proteus Software",*International Journal of Applied Engineering Research*, Volume 13, Number 6 (2018)pp.4440-4447.
- [17] J. Ahmed, and Zainal Salam, An Enhanced Adaptive P&O MPPT for Fast and Efficient Tracking Under Varying Environmental Conditions, accepted for publication in a future issue of *IEEE Transactions on Sustainable Impetus's*,DOI10.1109/TSTE.2018.

